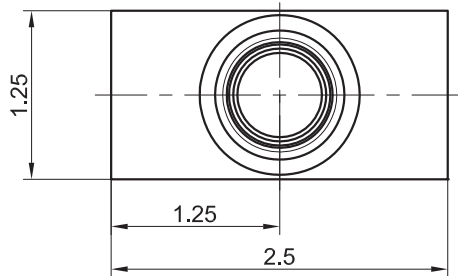


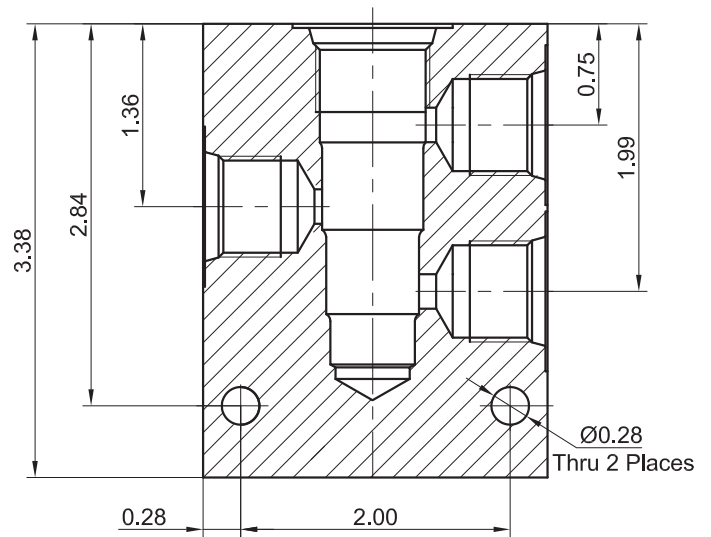
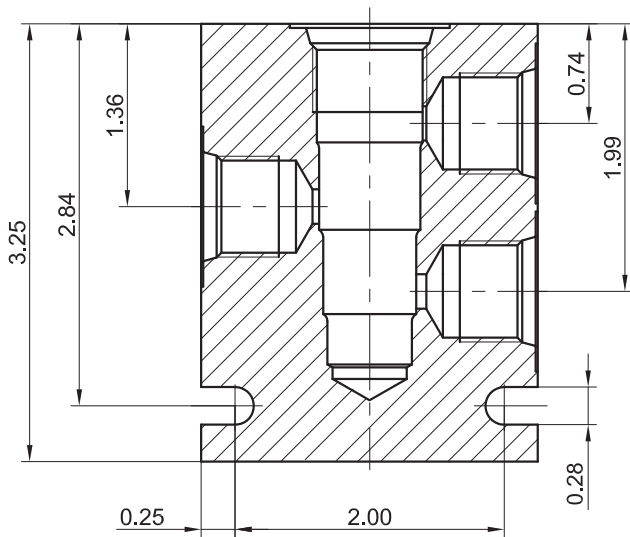
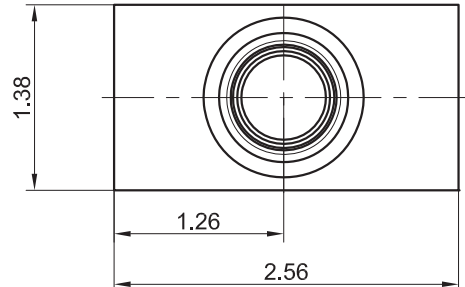
# 标准阀块

## Series 10 4/S-WAY Housings

4-WAY 3-PORT 四通三油口  
Aluminum (铝)



4-WAY 3-PORT 四通三油口  
Steel (钢)



Unit=Inches

SERIES 10 4/S-WAY HOUSINGS (LFD-10专用)			
Part No.	Material	Operating Pressure	Ports
LB10-4-A-3N/S	Aluminum,6061-T6	210Bar(3000psi)	3/8"NPTF
LB10-4-A-6T/S	Aluminum,6061-T6	210Bar(3000psi)	SAE6
LB10-4-A-8T/S	Aluminum,6061-T6	210Bar(3000psi)	SAE8
LB10-4-A-2G/S	Aluminum,6061-T6	210Bar(3000psi)	G 1/4
LB10-4-A-3G/S	Aluminum,6061-T6	210Bar(3000psi)	G 3/8
LB10-4-S-3N/S	Steel	350Bar(5000psi)	3/8"NPTF
LB10-4-S-6T/S	Steel	350Bar(5000psi)	SAE6
LB10-4-S-8T/S	Steel	350Bar(5000psi)	SAE8
LB10-4-S-2G/S	Steel	350Bar(5000psi)	G 1/4
LB10-4-S-3G/S	Steel	350Bar(5000psi)	G 3/8