

LCBGA/LCBGG/LCBGH

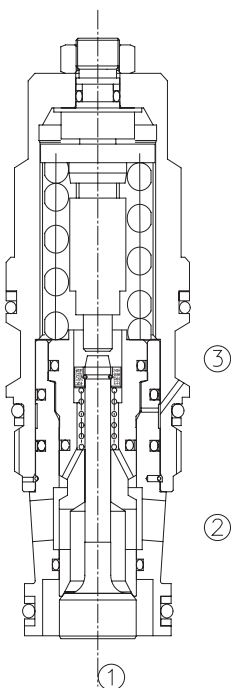
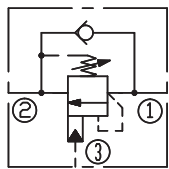
平衡阀

标准型 /standard

说明 DESCRIPTION

A cartridge-style standard capacity counterbalance valve
平衡阀

SYMBOL



工作 OPERATION

Counterbalance valves with pilot assist are meant for control on overrunning load. The check valve allows free flow from port ② to port ① while a direct-acting, pilot-assisted relief valve controls flow from port ① to port ②. Pilot assist at port ③ lowers the effective setting of the relief valve at a rate determined by the pilot ratio.

带先导开启平衡阀用于控制超越负载工况。油液从②口到①口单向自由流动；油液经直动，先导辅助从①口溢流到②口，③口是溢流辅助控制口，按控制比降低溢流功能的有效设定值。

特性 FEATURES

- Counterbalance valves should be set at least 1.3 times the maximum load induced pressure.

最大设定压力至少为最大负载压力的 1.3 倍。

- Full clockwise setting is less than 14 bar.

完全释压情况下，设定低于 14bar。

- Backpressure at port ② adds to the effective relief setting at a ratio of 1 plus the pilot ratio times the backpressure.

②口的背压按“控制比 +1”的倍数加到溢流阀的设定值上即增加值 = (1+ 控制比) × 压力值。

- Reseat exceeds 85% of set pressure when the valve is standard set. Setting lower than the standard set pressure may result in lower reseal percentages.

标准设定时，闭合压力值大于设定压力值的 85%；低于标准设定，则闭合压力值的百分比相应降低。

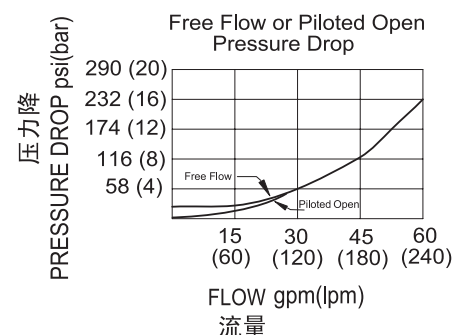
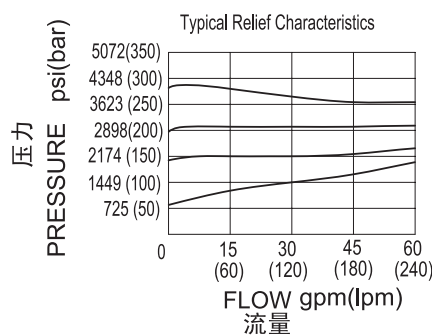
- Factory pressure setting established at 30cc/min(2 in³/min).

工厂的设定是指当溢流阀开启（流量为 30cc/min）时的压力。

技术参数 SPECIFICATIONS

最大设定值(Max. Setting):	280 bar(LCBGA) 350 bar(LCBGG/LCBGH)
最大负载(Max. Recommended Load Pressure at Max. Setting):	215 bar(LCBGA) 270 bar(LCBGG/LCBGH)
流量(Flow):	See PRESSURE DROP VS.FLOW graph.
内泄漏(Internal Leakage):	5 drops/min(滴/分).
控制比(Pilot Ratio):	(LCBGA) 3:1; (LCBGG) 4.5:1; (LCBGH) 10:1
温度(Temperature):	-40°F to +250°F(-40°C to +120°C)
过滤(Filtration):	See page (参见) N-1
油液(Fluids):	Mineral-based fluids with viscosities of 7.4 to 420 cSt.(矿物油粘度)
插孔(Cavity):	SUN T-17A, See page M-7
阀块材料(Body Material):	6061-T6 aluminum alloy rated to 207bar, Steel & Ductile iron rated to 350bar 6061-T6铝,允许使用最大压力207bar 钢和球铁允许使用最大压力350bar

压力 - 流量曲线 PRESSURE DROP VS.FLOW



订货代号 TO ORDER

LCB * * - * * * - * *
 ┌───┐ ┌──┐ ┌──┐ ┌──┐ ┌──┐ ┌──┐ ┌──┐
 1 2 3 4 5 6 7

<p>1 功能 LCB= 平衡阀 Counterbalance Cartridge Valve</p>	<p>4 控制方式 Control L=Standard Screw Adjustment</p>	<p>7 阀块油口 BODY PORTING 空白 Blank= 不带阀块 None 12T=SAE12 16T=SAE16 6G=G 3/4 8G=G 1</p>
<p>2 流量 Flow G=240L/min</p>	<p>5 弹簧调压范围 Spring Ranges</p>	<p>※ 阀块详见章节 K-25—K-26 其它螺纹油口也是可选择的 Other Porting is Available</p>
<p>3 控制比 Pilot Ratio A=3:1; G=4.5:1; H=10:1</p> <p>弹簧调压 LCBGA H=1000-4000psi(70-280bar) Preset:3000psi(210bar)(Check:1.7bar) I=400-1500psi(28-105bar) Preset:1000psi(70bar)(Check:1.7bar) A=1000-4000psi(70-280bar) Preset:3000psi(210bar)(Check:0.3bar) B=400-1500psi(28-105bar) Preset:1000psi(70bar)(Check:0.3bar)</p>	<p>6 油封 Seal Kits N= 丁晴橡胶 Buna N V= 氟橡胶 Viton</p> <p>弹簧调压 LCBGG/LCBGH J=2000-5000psi(140-350bar) Preset:3000psi(210bar)(Check:1.7bar) K=1000-2500psi(70-175bar) Preset:2000psi(140bar)(Check:1.7bar) C=2000-5000psi(140-350bar) Preset:3000psi(210bar)(Check:0.3bar) D=1000-2500psi(70-175bar) Preset:2000psi(140bar)(Check:0.3bar)</p>	

安装尺寸 INSTALLATION DIMENSIONS

Unit=Millimeters

