

LFD5-12

分流 / 集流阀

说明 DESCRIPTION

A cartridge-style pressure-compensated flow divider/combiner valve

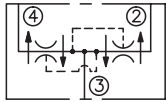
压力补偿型，插装式分流 / 集流阀

工作 OPERATION

In the dividing mode, the valve will divert input flow from port ③ to ports ② and ④, based on the ratio specified, regardless of operating pressure. The valve will combine input flow from ② and ④.

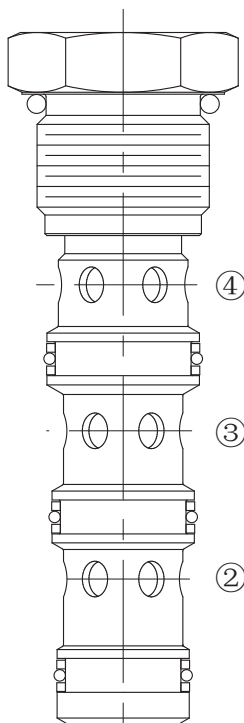
分流模式时，油液从③口按比例分流到②口和④口，与工作压力无关。集流时，汇合②口和④口油液。

SYMBOL

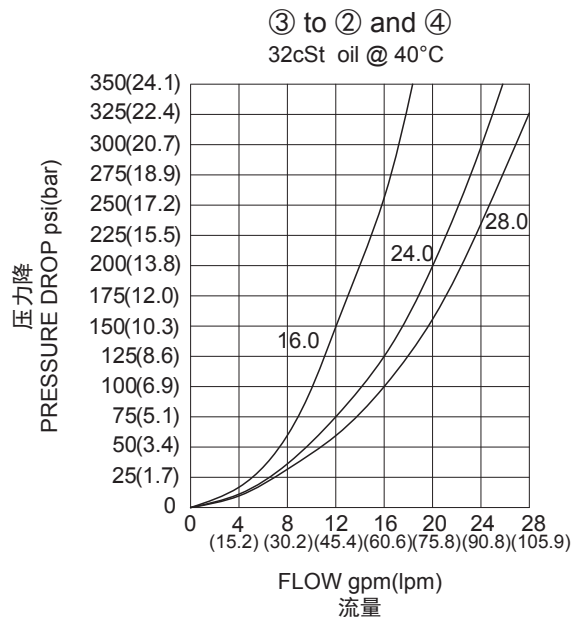


技术参数 SPECIFICATIONS

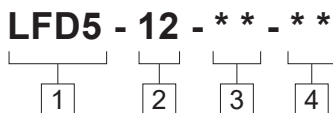
工作压力 (Operating Pressure):	345bar
流量选项 (Flow Options):	input flow: 15-60 lpm; ratio:50:50; model: LFD5-12-16.0 input flow: 23-90 lpm; ratio:50:50; model: LFD5-12-24.0 input flow: 30-106 lpm; ratio:50:50; model: LFD5-12-28.0
流量控制精度 (Flow Maintenance Accuracy):	10% of inlet flow for Models 16.0 and 24.0 15% of inlet flow for Model 28.0
温度 (Temperature):	-40°F to +250°F (-40°C to +120°C)
过滤 (Filtration):	See Page (参见) N-1
油液 (Fluids):	Mineral-based fluids with viscosities of 7.4 to 420 cSt. (矿物油粘度)
插孔 (Cavity):	12-4, See page M-27
阀块材料 (Body Material):	6061-T6 aluminum alloy rated at 207Bar, Steel & Ductile iron rated at 350Bar 6061-T6铝, 允许使用最大压力207Bar 钢和球铁允许使用最大压力350Bar



压力 - 流量曲线 PRESSURE DROP VS.FLOW



订货代号 TO ORDER



- | | | |
|--|--|---|
| <p>1 功能
LFD5= 压力补偿型, 插装式分流 / 集流阀
Cartridge-style Pressure-compensated
Flow Divider/Combiner Valve</p> | <p>3 流量选择 Flow Options
16.0=input flow: 15-60 lpm; ratio: 50:50;
24.0=input flow: 23-90 lpm; ratio: 50:50;
28.0=input flow: 30-106 lpm; ratio: 50:50;</p> | <p>4 阀块油口 Body Porting
空白 Blank= 不带阀块 None
10T=SAE10
12T=SAE12
6G=G 3/4</p> |
| <p>2 规格 Size
12=12 规格</p> | <p>※ 阀块详见章节 K-31
其它螺纹油口也是可选择的
Other Porting is Available</p> | |

F

安装尺寸 **INSTALLATION DIMENSIONS**

Unit=Millimeters

