

# LCKEB

## 液控单向阀 (标准导压)

### 说明 DESCRIPTION

A cartridge-style Pilot to open, poppet-type check valve  
锥阀式液控单向阀

### 工作 OPERATION

The valve has a non-sealed pilot. It allows free flow from port ② to port ① and blocks flow from port ① to port ② . Flow will be allowed from port ① to port ② when sufficient pressure is applied at pilot ③ .

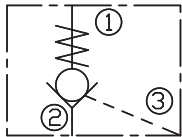
This pilot operated check valve has a 3:1 pilot ratio, meaning that at least one-third of the load pressure held at ① is required at pilot ③ to open the valve.

Pressure at port ② directly opposes pilot pressure.

此阀具有非密封导压。当在②口的压力超过开启压力，②到①开启；在反方向，①到②关闭；

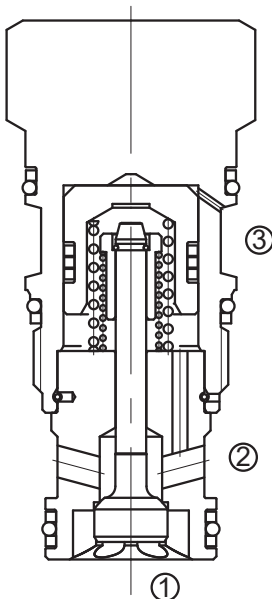
当在③口所需的液压力达到①口负载的 1/3 时，阀芯打开，①和②通，液控比为 3:1；②口压力将直接抵抗先导压力。

### SYMBOL

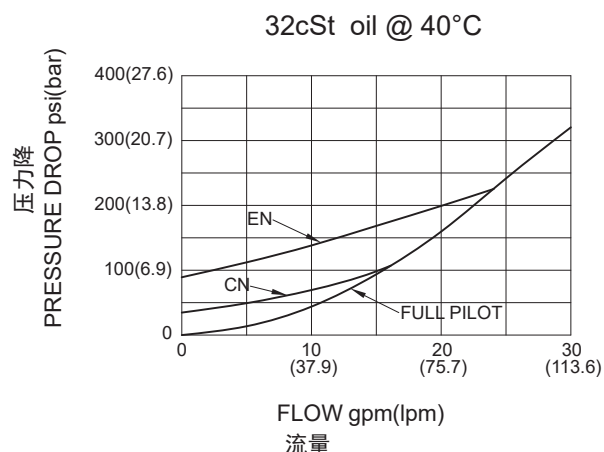


### 技术参数 SPECIFICATIONS

工作压力(Operating Pressure):	350bar
流量(Flow):	See PRESSURE DROP VS. FLOW graph.
内泄漏(Internal Leakage):	1 drops/min.(滴/分) max. at 350bar
开启压力(Crack Pressure):	C=2.0bar A=0.3bar B=1.0bar D=3.5bar E=5.0bar F=7.0bar
控制比(Pilot Ratio):	3:1
温度(Temperature):	-40°F to +250°F (-40 °C to +120 °C)
过滤(Filtration):	See page (参见) N-1
油液(Fluids):	Mineral-based fluids with viscosities of 7.4 to 420 cSt.(矿物油粘度)
插孔(Cavity):	T-2A, See page M-6
阀块材料(Body Material):	Steel & Ductile iron rated to 350Bar 钢和球铁允许使用最大压力350bar



### 压力 - 流量曲线 PRESSURE DROP VS.FLOW



## 订货代号 TO ORDER

**LCK E B - X \* \* - \* \***  

┌──┴──┐
┌──┴──┐
┌──┴──┐
┌──┴──┐
┌──┴──┐
┌──┴──┐
  

1
2
3
4
5
6
7

<p><b>1 功能</b> LCK= 液控单向阀 Pilot to Open Check Valve</p>	<p><b>5 开启压力 Cracking Pressure</b> C=2bar(30psi) A=0.3bar(4psi) B=1bar(15psi) D=3.5bar(50psi) E=5bar(75psi) F=7bar(100psi)</p>	<p><b>7 阀块油口 Body Porting</b> 空白 Blank= 不带阀块 None 8T=SAE 8 10T=SAE 10 3G=G 3/8 4G=G 1/2</p>
<p><b>2 流量 Capacity</b> E=120L/min</p>	<p><b>6 油封 Seal Kits</b> N=Buna N V=Viton</p>	<p>※ 阀块详见章节 K-23—K-24 其它螺纹油口也是可选择的 Other Porting is Available</p>
<p><b>3 类型</b> B= 标准导压型 Standard Pilot</p>		
<p><b>4 控制方式 Control</b> X= 常规 Standard Pilot</p>		

D

## 安装尺寸 INSTALLATION DIMENSIONS

Unit=Millimeters

