

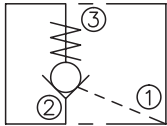
LPC-08

液控单向阀

说明 DESCRIPTION

A cartridge-style pilot-to-open ball-type check valve
球阀式液控单向阀

SYMBOL



工作 OPERATION

The valve allows flow from ② to ③, while normally blocking flow from ③ to ②. Flow will be allowed from ③ to ② when sufficient pressure is applied at ①.

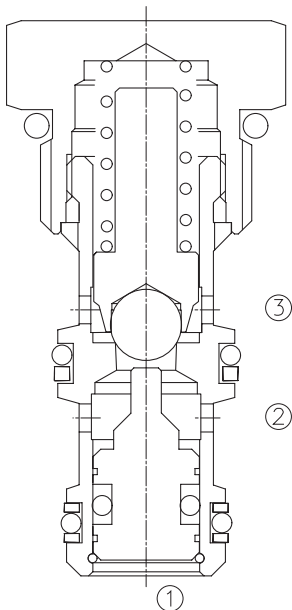
The cartridge has a 3:1 pilot ratio, meaning that at least one-third of the load pressure held at ③ is required at ① to open the valve.

当在②口的压力超过开启压力，②到③开启；在反方向，③到②关闭；

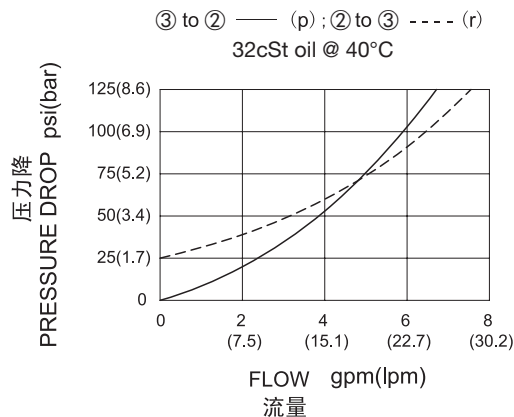
当在①口所需的液压力达到③口负载的 1/3 时，阀芯打开，③和②通，液控比为 3:1。

技术参数 SPECIFICATIONS

工作压力(Operating Pressure):	250bar
流量(Flow):	See PRESSURE DROP VS.FLOW graph.
内泄漏(Internal Leakage):	③to②: 3 drops/min(滴/分). (0.15 ml/min.) at 250bar ②to①with sealed piston: zero leakage
开启压力(Crack Pressures):	1.7=1.7bar 2.1=2.1bar 5.2=5.2bar 6.2=6.2bar 8.2=8.2bar 18.3=18.3bar
控制比(Pilot Ratio):	3:1
温度(Temperature):	-40°F to +250°F(-40°C to +120°C)
过滤(Filtration):	See page (参见) N-1
油液(Fluids):	Mineral-based fluids with viscosities of 7.4 to 420 cSt.(矿物油粘度)
插孔(Cavity):	08-3,See page M-1
阀块材料(Body Material):	6061-T6 aluminum alloy rated to 207bar, Steel & Ductile iron rated to 350bar 6061-T6铝,允许使用最大压力207bar 钢和球铁允许使用最大压力350bar



压力 - 流量曲线 PRESSURE DROP VS.FLOW



订货代号 TO ORDER

LPC - 08 - * * - * * - * *

┌───┐
1

┌───┐
2

┌───┐
3

┌───┐
4

┌───┐
5

1 功能
LPC= 液控单向阀
Pilot to Open Check Valve

2 规格 Size
08=08 规格

3 油封 Seal Kits
N= 丁晴橡胶 (标准型) Buna N(Std)
NS= 丁晴橡胶 (活塞上带密封圈)
最低开启压力为 6.2bar
Buna N with sealed piston
6.2bar(90psi)minimun spring
V= 氟橡胶 V-Fluorocarbon
VS= 氟橡胶 (活塞上带密封圈)
最低开启压力为 6.2bar
VS-Fluorocarbon with sealed piston
6.2bar(90psi)minimun spring

4 开启压力 Cracking Pressure
1.7=1.7bar
2.1=2.1bar
5.2=5.2bar
6.2=6.2bar
8.2=8.2bar
18.3=18.3bar

5 阀块油口 Body Porting
空白 Blank= 不带阀块 None
4T=SAE4
6T=SAE6
2G=G 1/4
3G=G 3/8

※ 阀块详见章节 K-2
其它螺纹油口也是可选择的
Other Porting is Available

D

安装尺寸 INSTALLATION DIMENSIONS

Unit=Millimeters

