

LPRPS2-10

先导式减压 / 溢流阀

说明 DESCRIPTION

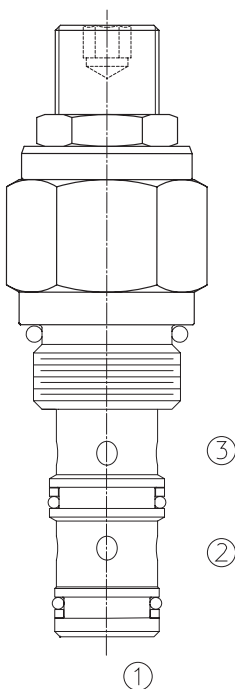
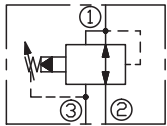
A cartridge-style pilot-operated pressure reducing/relieving valve
先导式减压 / 溢流阀

工作 OPERATION

In its steady state, the valve allows flow to pass from ② to ①, with the spring chamber constantly drained at ③. On attainment of a pre-determined pressure at ①, the cartridge shifts to restrict input flow at ②, thereby regulating pressure at ①. In this mode, the valve will also relieve ① to ③ over the reducing setting.

在①口的压力达到弹簧设定的压力时，从②到①减压。弹簧腔内排到③口。
当①口的压力超过预设定的压力时，②口渐渐关闭，①到③开始溢流。

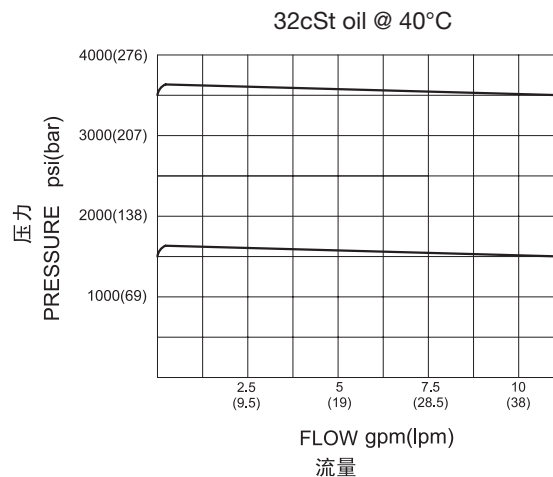
SYMBOL



技术参数 SPECIFICATIONS

工作压力(Operating Pressure):	350bar
流量(Flow):	See performance chart
内泄漏(Internal Leakage):	from ② to ③ (内泄漏 ②到③) 82 cc/min. max. at 85% of crack pressure
弹簧调压范围(Standard Spring Ranges):	3.45-103 bar, preset 预设定: 52bar 3.45-207 bar, preset 预设定: 103bar 3.45-350 bar, preset 预设定: 175bar
温度(Temperature):	-40°F to +250°F (-40°C to +120°C)
过滤(Filtration):	See page (参见) N-1
油液(Fluids):	Mineral-based fluids with viscosities of 7.4 to 420 cSt. (矿物油粘度)
插孔(Cavity):	10-3, See page M-2
阀块材料(Body Material):	Steel & Ductile iron rated to 350bar 钢和球铁允许使用最大压力350bar

压力 - 流量曲线 PRESSURE DROP VS.FLOW



订货代号 TO ORDER

LPRPS2 - 10 - * * - * / ** - * ***

┌───┐
┌──┐
┌──┐
┌──┐
┌──┐
┌──┐

1
2
3
4
5
6

<p>1 功能 LPRPS2= 先导式减压 / 溢流阀 Pilot-operated Pressure Reducing/Relieving Valve</p>	<p>3 弹簧调压范围 Spring Ranges 15=50-1500psi(3.45-103bar) Preset:750psi(52bar) 30=50-3000psi(3.45-207bar) Preset:1490psi(103bar) 50=50-5000psi(27.6-350bar) Preset:2500psi(175bar)</p>	<p>5 设定压力 Setting In Bar 空白 Blank= 预设定 Preset 例 Example:0100=100bar</p>
<p>2 规格 Size 10=10 规格</p>	<p>4 调节 Adjustment K= 调节手轮 1-1/2"Dia Knob 内六角调节杆 (Omit for 5/16" Hex Allen head)</p>	<p>6 阀块油口 Body Porting 空白 Blank= 不带阀块 None 6T=SAE6 8T=SAE8 2G=G 1/4 3G=G 3/8</p>

※ 阀块详见章节 K-5
其它螺纹油口也是可选择的
Other Porting is Available

安装尺寸 INSTALLATION DIMENSIONS

Unit=Millimeters

