

# LPPDB

## 先导式减压 / 溢流阀

### 说明 DESCRIPTION

A cartridge-style pilot-operated pressure reducing/relieving valve  
先导式减压 / 溢流阀

### 工作 OPERATION

Pilot-operated, pressure reducing/relieving valves reduce a high primary pressure at the inlet (port ②) to a constant reduced pressure at port ①, with a full-flow relief function from port ① to tank (port ③). Pressure at port ③ is directly additive to the valve setting at a 1:1 ratio and should not exceed 350 bar.

先导式减压 / 溢流阀将②口初始高压减压到①口，①口可得到稳定不变的压力值，同时具有从①口到③口的全流量溢流功能。油口③的压力按 1:1 叠加到阀的设定上，且油口③的压力不应超过 350bar。

Recommended maximum inlet pressure is determined by the adjustment range.

Ranges D, E, N, and Q are tested with a 2000 psi (140 bar) maximum differential between inlet and reduced pressure.

Ranges A, B, and H are tested with a 3000 psi (210 bar) maximum differential between inlet and reduced pressure.

Ranges C, and W are tested with a 5000 psi (350 bar) of inlet pressure.

此阀推荐的②口最大压力是由减压阀的弹簧调节范围而定的。

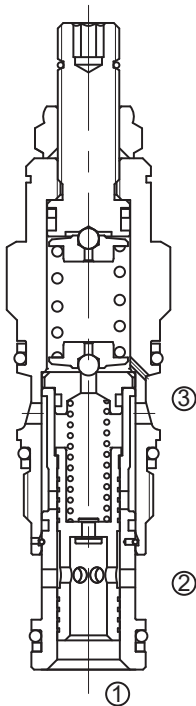
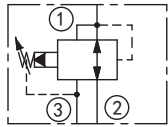
弹簧调节范围：D, E, N 和 Q，②口和①口的最大允许压差为 140Bar；

弹簧调节范围：A, B 和 H，②口和①口的最大允许压差为 210Bar；

弹簧调节范围：C 和 W，是由进油口最大压力 350Bar 来测试的；

例：弹簧调节范围 D (1.7-55bar)，最大允许压差为 140bar，若①口设定为 50bar，则②口最大允许压力为：190bar。

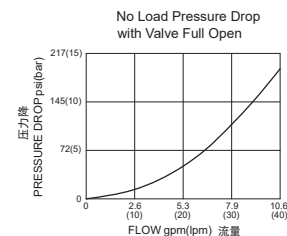
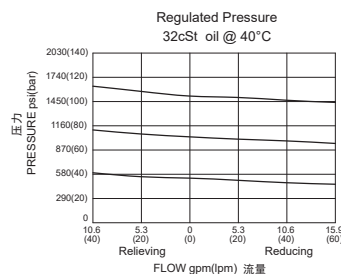
### SYMBOL



### 技术参数 SPECIFICATIONS

最大工作压力(Max. Operating Pressure):	350bar
流量(Flow):	See PRESSURE DROP VS. FLOW graph.
弹簧调压范围(Standard Spring Ranges):	A: 7-210bar, preset 预设: 14bar B: 3.5-105bar, preset 预设: 14bar N: 4- 55bar, preset 预设: 14bar Q: 4- 28bar, preset 预设: 14bar W: 10.5-315bar, preset 预设: 14bar
附加选项(Additional Options):	C: 10.5-420bar, preset 预设: 14bar D: 1.7-55bar, preset 预设: 14bar E: 1.7-28bar, preset 预设: 14bar H: 2-210bar, preset 预设: 14bar J: 1.7-105bar, preset 预设: 14bar K: 5-105bar, preset 预设: 14bar O: 1-28bar, preset 预设: 14bar P: 2.8-28bar, preset 预设: 14bar
温度(Temperature):	-40°F to +250°F (-40 °C to +120 °C)
过滤(Filtration):	See page (参见) N-1
油液(Fluids):	Mineral-based fluids with viscosities of 7.4 to 420 cSt.(矿物油粘度)
插孔(Cavity):	T-11A, See page M-6
阀块材料(Body Material):	Steel & Ductile iron rated to 350Bar 钢和球铁允许使用最大压力350bar

### 压力 - 流量曲线 PRESSURE DROP VS.FLOW



## 订货代号 TO ORDER

**LPP D B - \* \* \* - \* \***

1   
 2   
 3
4
5   
 6

**1 功能**

LPP= 先导式减压 / 溢流阀  
Pilot-operated Pressure  
Reducing/Relieving Valve

**2 流量 Capacity**

D=40L/min

**3 控制方式 Control**

L= 标准螺钉调节  
Standard screw Adjustment

**4 弹簧调压范围 Spring Ranges**

A=100-3000psi(7-210bar)  
Preset:200psi(14bar)  
B=50-1500psi(3.5-105bar)  
Preset:200psi(14bar)  
N=60-800psi(4-55bar)  
Preset:200psi(14bar)  
Q=60-400psi(4-28bar)  
Preset:200psi(14bar)  
W=150-4500psi(10.5-315bar)  
Preset:200psi(14bar)

**5 油封 Seal Kits**

N= 丁腈橡胶 Buna N  
V= 氟橡胶 Viton

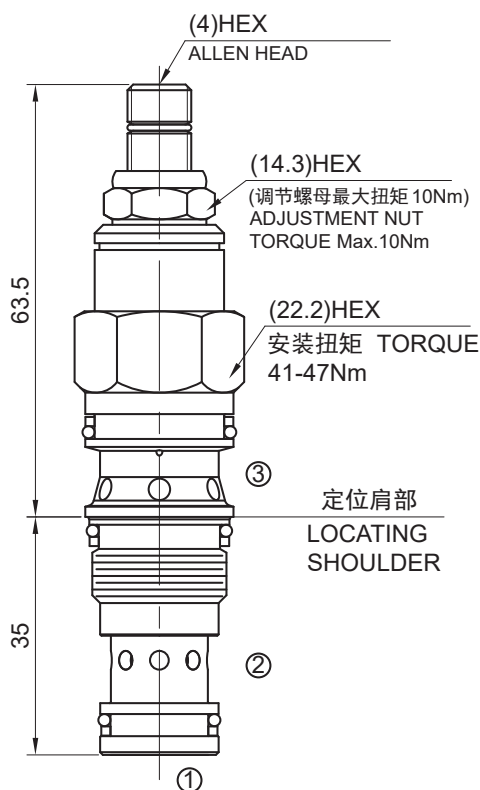
**6 阀块油口 Body Porting**

空白 Blank= 不带阀块 None  
6T=SAE6  
8T=SAE8  
3G=G 3/8  
4G=G 1/2

※ 阀块详见章节 K-17  
其它螺纹油口也是可选择的  
Other Porting is Available

## 安装尺寸 INSTALLATION DIMENSIONS

Unit=Millimeters



**附加选项 Additional Options**

C=150-6000psi(10.5-420bar)  
Preset:200psi(14bar)  
D=25-800psi(1.7-55bar)  
Preset:200psi(14bar)  
E=25-400psi(1.7-28bar)  
Preset:200psi(14bar)  
H=30-3000psi(2-210bar)  
Preset:200psi(14bar)  
J=25-1500psi(1.7-105bar)  
Preset:200psi(14bar)  
K=75-1500psi(5-105bar)  
Preset:200psi(14bar)  
O=15-400psi(1-28bar)  
Preset:200psi(14bar)  
P=40-400psi(2.8-28bar)  
Preset:200psi(14bar)

E