

# LSV2-10-3

## 二位三通电磁阀 滑阀型

### 说明 DESCRIPTION

A solenoid operated, 3-way, 2-position, spool-type cartridge valve.

二位,三通,滑阀式电磁阀

### 工作 OPERATION

When de-energized, the valve allows flow from ② to ① or from ① to ②, while blocking flow at ③. When energized, the cartridge's spool shifts to allow flow from ① to ③ or from ③ to ①, while blocking flow at ②.

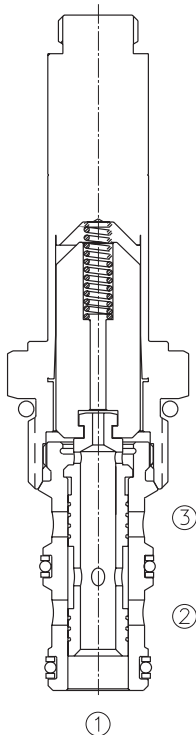
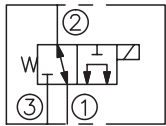
失电时, ②和①通, 与③不通; 得电时, ①和③通, 与②不通。

### 手控应急 Operation of Manual Override Option

To override, push button in, twist counterclockwise 180° and release. In this position, valve will remain detented in the shifted condition. To return to normal operation, push button in, twist clockwise 180° and release. Override will be detented in this position.

请按下按钮, 再逆时针方向旋转 180°, 后松开, ①和③通, 与②不通; 请按下按钮, 再顺时针方向旋转 180°, 后松开, 返回常态。

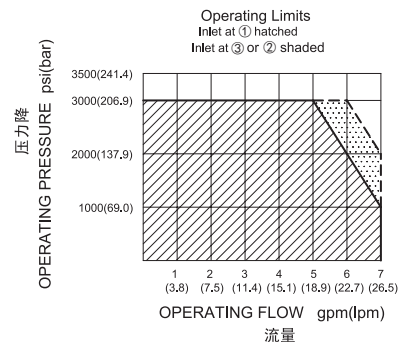
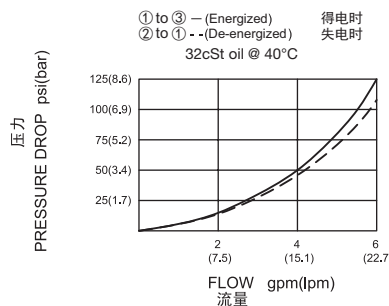
### SYMBOL



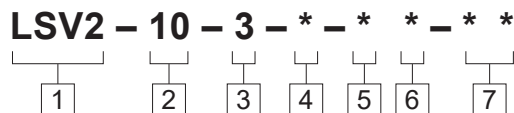
### 技术参数 SPECIFICATIONS

工作压力(Operating Pressure):	207bar
流量(Flow):	See PERFORMANCE CHARACTERISTIC graph.
内泄漏(Internal Leakage):	(per land)82cc/min.(毫升/分) max. at 207bar
温度(Temperature):	-40°F to +212°F(-40°C to +100°C)
线圈额定负载(Coil Duty Rating):	Continuous from 85% to 115% of nominal voltage(连续工作电压)
过滤(Filtration):	See page (参见) N-1
油液(Fluids):	Mineral-based fluids with viscosities of 7.4 to 420 cSt.(矿物油粘度)
插孔(Cavity):	10-3, See page M-2
阀块材料(Body Material):	6061-T6 aluminum alloy rated to 207bar, Steel & Ductile iron rated to 350bar 6061-T6铝, 允许使用最大压力207bar 钢和球铁允许使用最大压力350bar

### 压力 - 流量曲线 PRESSURE DROP VS.FLOW



订货代号 TO ORDER



**1 功能**  
LSV2= 电磁阀 Solenoid Valve

**2 规格 Size**  
10=10 规格

**3 流道类型 Flow Path**  
3= 三通

**4 手控应急**  
空白 Blank= 无手控应急 None  
M= 手控应急 Manual Override

**5 电压 Voltage**  
1=12 VDC  
2=24 VDC  
3=110 VAC  
4=220 VAC  
5=10 VDC

**6 线圈连接 Coil Connection**  
D= Double Lead 双线  
S= Single Lead 单线  
H= Hirschmann 三插  
C= Conduit 带嵌套  
ER= Deutsch Connector(Water-proof Coil)  
德意志插座(防水线圈)  
B= Double Spade 双插

**7 阀块油口 Body Porting**  
空白 Blank= 不带阀块 None  
6T=SAE 6  
8T=SAE 8  
2G=G 1/4  
3G=G 3/8

※ 阀块详见章节 K-5  
其它螺纹油口也是可选择的  
Other Porting Is Available

**安装尺寸 INSTALLATION DIMENSIONS**

Coil Must Be Installed With Letter Up  
安装线圈时，字母必须朝上。

Unit=Millimeters

