

# LSV2-10-34-T

## 三位四通电磁阀 滑阀型

### 说明 DESCRIPTION

A solenoid operated, 4-way, 3-position, tandem center, spool-type cartridge valve.

三位，四通，滑阀式电磁阀

### 工作 OPERATION

When de-energized, the valve allows flow from ③ to ① while blocking ② and ④ .

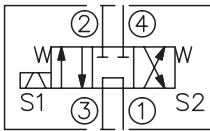
When coil S1 is energized, the valve allows flow from ④ to ① and from ③ to ② ; When coil S2 is energized, the valve allows flow from ② to ① and from ③ to ④ .

失电时，①和③通，②与④关闭；

线圈 S1 得电时，④和①通，③与②通；

线圈 S2 得电时，②和①通，③与④通。

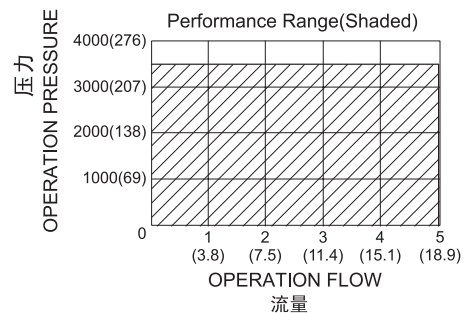
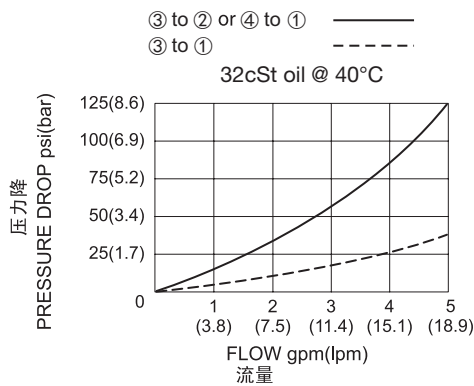
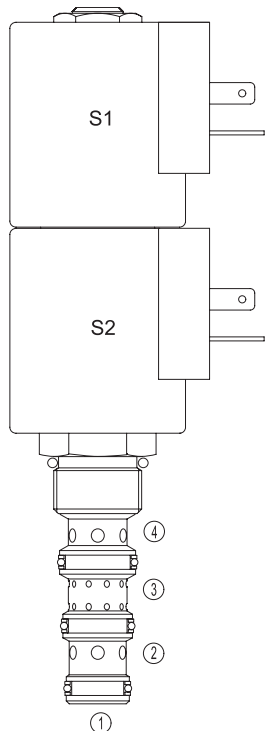
### SYMBOL



### 技术参数 SPECIFICATIONS

工作压力(Operating Pressure):	207bar
流量(Flow):	See PERFORMANCE CHARACTERISTIC graph.
内泄漏(Internal Leakage):	164cc/min.(毫升/分) max.
温度(Temperature):	-40°F to +212°F(-40°C to +100°C)
线圈额定负载(Coil Duty Rating):	Continuous from 85% to 115% of nominal voltage(连续工作电压)
过滤(Filtration):	See page (参见) N-1
油液(Fluids):	Mineral-based fluids with viscosities of 7.4 to 420 cSt.(矿物油粘度)
插孔(Cavity):	10-4, See page M-2
阀块材料(Body Material):	6061-T6 aluminum alloy rated to 207bar, Steel & Ductile iron rated to 350bar 6061-T6铝,允许使用最大压力207bar 钢和球铁允许使用最大压力350bar

### 压力 – 流量曲线 PRESSURE DROP VS.FLOW



**LSV2 - 10 - 34 - T - \* \* - \* \***  

┌───┐
┌──┐
┌──┐
┌──┐
┌──┐
┌──┐
┌──┐

1
2
3
4
5
6
7

<p><b>1</b> 功能 LSV2= 电磁阀 Solenoid Valve</p> <hr/> <p><b>2</b> 规格 Size 10=10 规格</p> <hr/> <p><b>3</b> 流道类型 Flow Path 34= 四通</p> <hr/> <p><b>4</b> 模式 T= 中位旁通 Tandem Center</p>	<p><b>5</b> 电压 Voltage 1=12 VDC 2=24 VDC 3=110 VAC 4=220 VAC 5=10 VDC</p> <hr/> <p><b>6</b> 线圈连接 Coil Connection D= Double Lead 双线 H= Hirschmann 三插 C= Conduit 带嵌套 ER= Deutsch Connector(Water-proof Coil) 德意志插座(防水线圈) B= Double Spade 双插</p>	<p><b>7</b> 阀块油口 Body Porting 空白 Blank= 不带阀块 None 6T=SAE 6 8T=SAE 8 2G=G 1/4 3G=G 3/8</p> <hr/> <p>※ 阀块详见章节 K-6 其它螺纹油口也是可选择的 Other Porting Is Available</p>
---	---	---

### 安装尺寸 INSTALLATION DIMENSIONS

Coil Must Be Installed With Letter Up  
安装线圈时，字母必须朝上。

Unit=Millimeters

