

LCKCB

液控单向阀 (标准导压)

说明 DESCRIPTION

A cartridge-style Pilot to open, poppet-type check valve
锥阀式液控单向阀

工作 OPERATION

The valve has a non-sealed pilot. It allows free flow from port ② to port ① and blocks flow from port ① to port ② or holding a load. Flow will be allowed from port ① to port ② when pressure is applied to pilot ③.

This pilot operated check valve has a 3:1 pilot ratio, meaning that at least one-third of the load pressure held at ① is required at pilot ③ to open the valve.

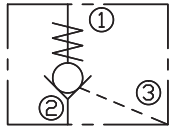
Pressure at port ② directly opposes pilot pressure.

此阀具有非密封导压。当在②口的压力超过开启压力，②到①开启；在反方向，①到②关闭；

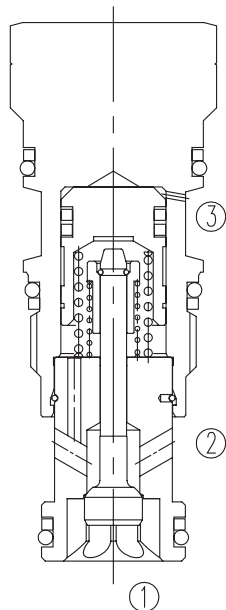
当在③口所需的液压力达到①口负载的 1/3 时，阀芯打开，①和②通，液控比为 3:1。②口压力将直接抵抗先导压力。

技术参数 SPECIFICATIONS

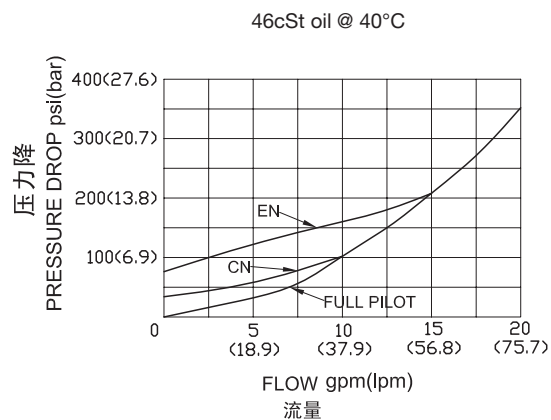
SYMBOL



工作压力(Operating Pressure):	350bar
流量(Flow):	See PRESSURE DROP VS.FLOW graph.
内泄漏(Internal Leakage):	1 drops/min.(滴/分) max. at 350bar
开启压力(Crack Pressures):	C=2.0bar A=0.3bar B=1.0bar D=3.5bar E=5.0bar F=7.0bar
控制比(Pilot Ratio):	3:1
温度(Temperature):	-40°F to +250°F(-40°C to +120°C)
过滤(Filtration):	See page (参见) N-1
油液(Fluids):	Mineral-based fluids with viscosities of 7.4 to 420 cSt.(矿物油粘度)
插孔(Cavity):	SUN T-11A,See page M-6
阀块材料(Body Material):	Steel & Ductile iron rated to 350bar 钢和球铁允许使用最大压力350bar



压力 - 流量曲线 PRESSURE DROP VS.FLOW



订货代号 TO ORDER

LCK C B - X * * - * *

└──┬──┘
└──┬──┘
└──┬──┘
└──┬──┘
└──┬──┘
└──┬──┘
└──┬──┘

1
2
3
4
5
6
7

1 功能

LCK= 液控单向阀
Pilot to Open Check Valve

2 流量 Flow

C=60L/min

3 类型

B= 标准导压型 Standard Pilot

4 控制方式 Control

X= 常规 Standard Pilot

5 开启压力 Cracking Pressure

C=2bar(30psi)
A=0.3bar(4psi)
B=1bar(15psi)
D=3.5bar(50psi)
E=5bar(75psi)
F=7bar(100psi)

6 油封 Seal Kits

N= 丁晴橡胶 Buna N
V= 氟橡胶 Viton

7 阀块油口 Body Porting

空白 Blank= 不带阀块 None
6T=SAE6
8T=SAE8
3G=G 3/8
4G=G 1/2

※ 阀块详见章节 K-17-K-22
其它螺纹油口也是可选择的
Other Porting is Available

D

安装尺寸 INSTALLATION DIMENSIONS

Unit=Millimeters

